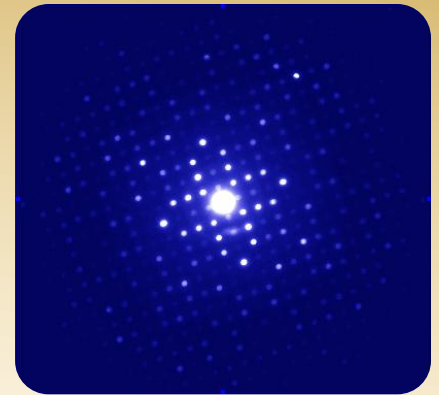
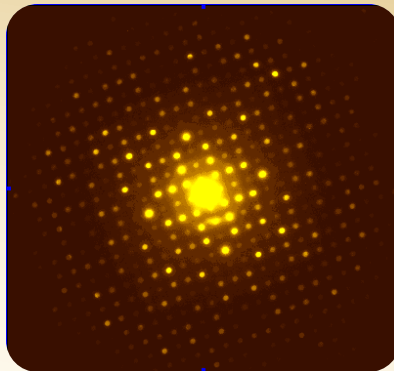
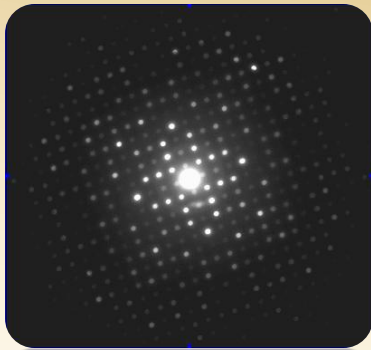
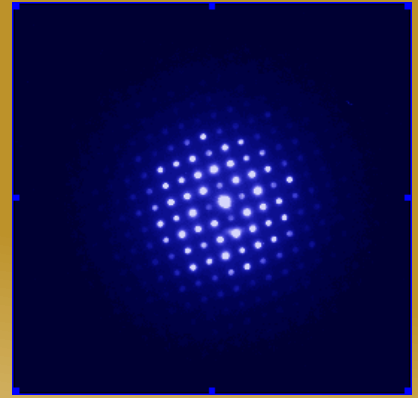
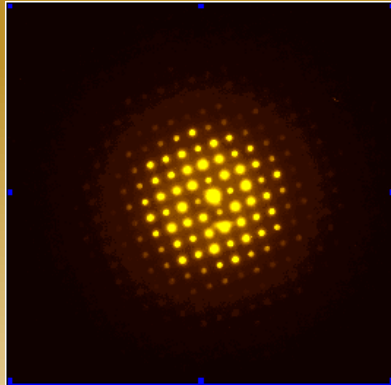
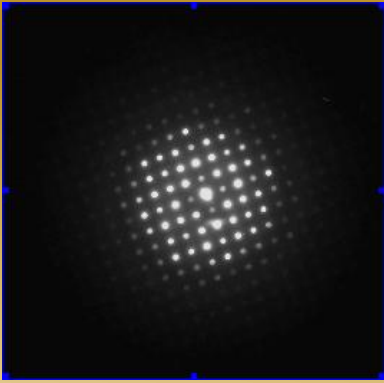


## NO PRECESSION



## PRECESSION

Erbium Germanium Oxide (Er<sub>2</sub>Ge<sub>2</sub>O<sub>7</sub>, tetragonal crystal) along the 001 zone axis ( before and after precession to reveal kinematical ED intensities) Philips TEM CM30T, 300 kV , NanoMEGAS “spinning star” precession device , precession angle 40 mrad.

COURTESY : Dr. P.Midgley , Dr. A.Eggeman University of Cambridge Dept Materials Science,Cambridge UK