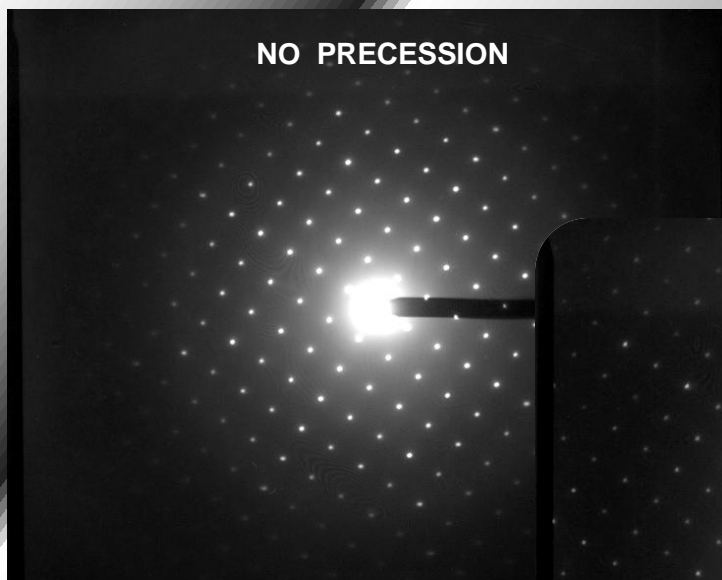
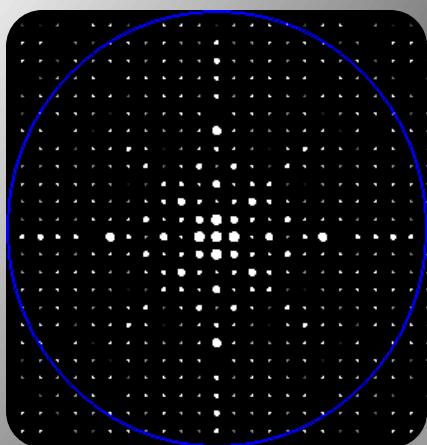
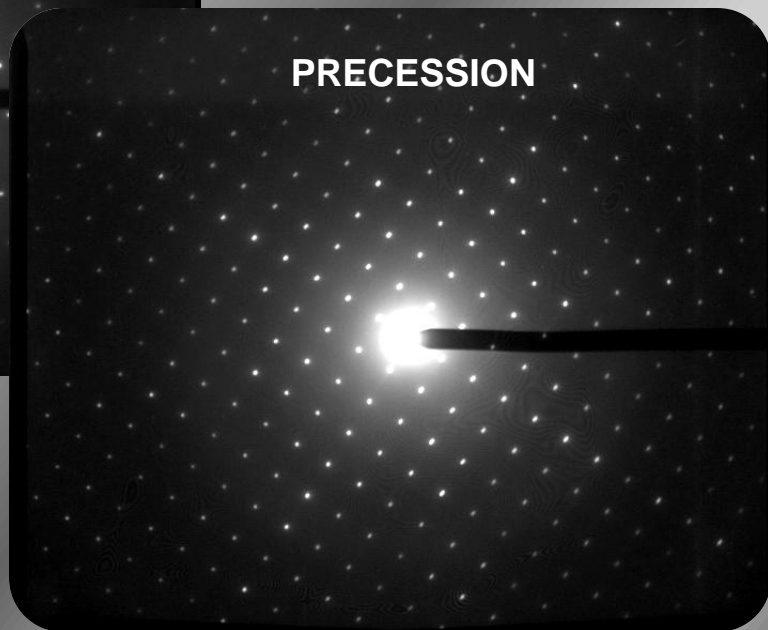


NO PRECESSION

Zeolite LTA



PRECESSION



**SAED electron diffraction patterns of LTA zeolite (left) and precession diffraction patterns (right) simulated kinematical pattern (middle)
“spinning star” precession device , 1° precession angle, 100 KV CM 10
Philips ,KeenView SIS CCD**

**COURTESY : Dr. J.L.Jorda Instituto Tecnologia Quimica UPV-CSIC
Valencia (Spain)**

