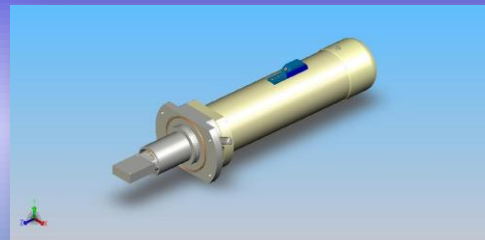
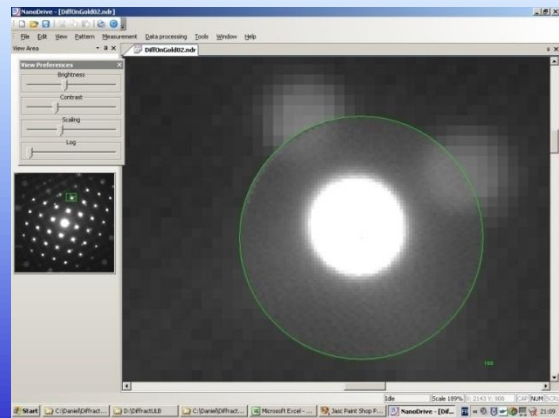


# ELECTRON DIFFRACTOMETER



Electron diffractometer "Pleiades" showing ED pattern of monocrystalline gold at 24 bit dynamic range (16.000.000 grey levels) (top left) and detector 35 mm TEM port housing manufactured by Fischione Inc on FEI Tecnai (top right) JEOL 2100 and electron diffractometer (middle), Jeol 2010 and Philips CM 12 with electron diffractometer (low left and right)