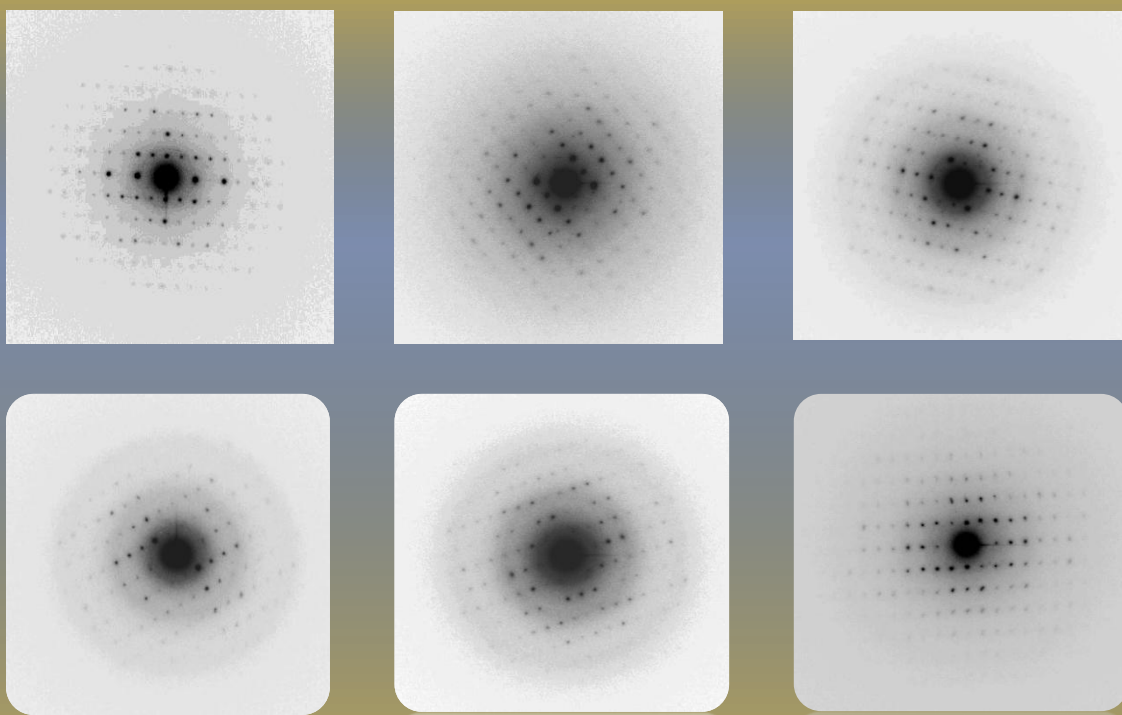
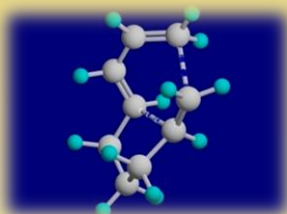


Precession electron diffraction from penicillin G - potassium

PED patterns in pharmaceutical crystals allow to work with close or with ZA oriented patterns, revealing true crystal symmetry and kinematical intensities good for structure determinations



Samples C.Giacovazzo CNR Bari, CM 30 STWIN 300 KV,
NanoMEGAS Spinning Star precession device, precession angle 1°



Courtesy JP Abrahams, D.Georguieva Univ Leiden