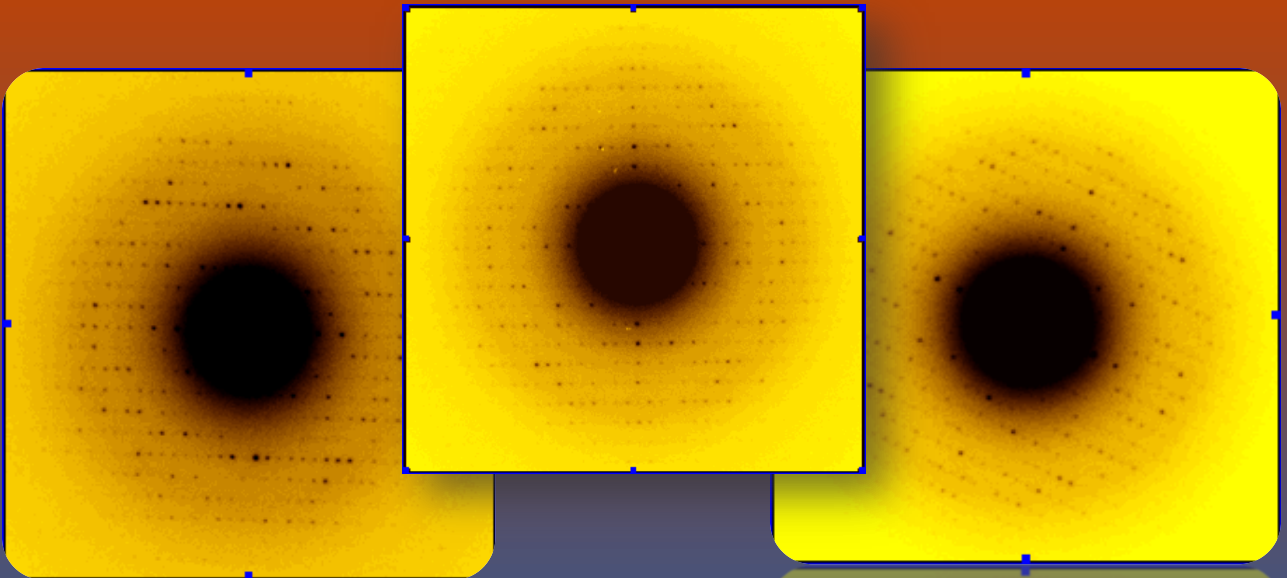
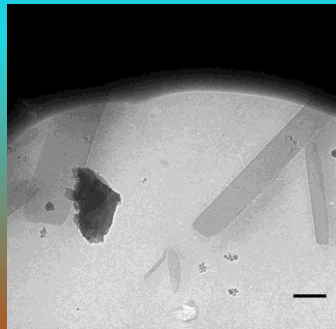


# Structure determination from precession electron diffraction of 3d protein lysozyme nanocrystals

protein crystals show much better quality PED patterns ( suitable for symmetry and structure determination ) than conventional SAED patterns



sub-micron crystals of different proteins can be grown reproducibly

These protein nano-crystals are small enough for electron diffraction

Crystals can be frozen successfully: diffraction so far  $\sim 2.1 \text{ \AA}$