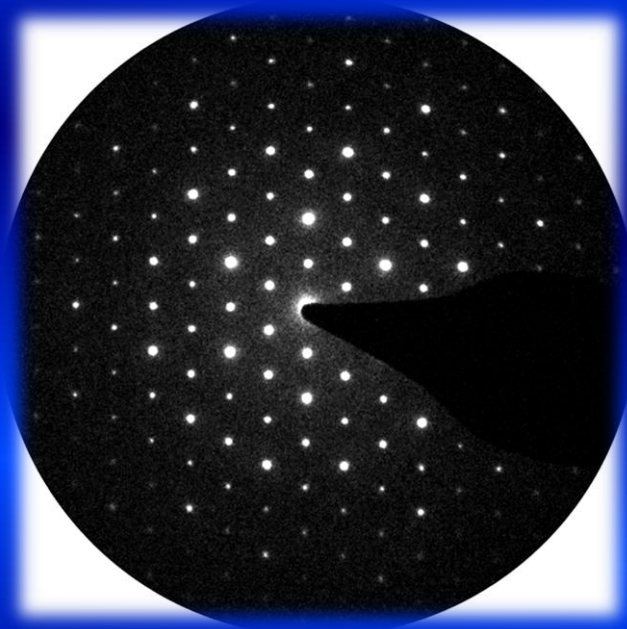


NO PRECESSION



PRECESSION



Patterns are recorded along [001] of the trigonal  $(\text{NH}_4)_2\text{In}_{12}\text{Se}_{19}$

left side-pattern shows just ZOLZ-intensities, while right side-pattern also contains FOLZ intensities. The latter is important, because only these intensities (not visible in SAED) indicate a complex ordering of the structure and reveal true space group symmetry

“spinning star” precession device, Philips CM30 STWIN 300 KV, 2° precession angle, Gatan CCD camera.

COURTESY : Dr. Lorenz Kienle Max-Planck-Institut Stuttgart (Germany)