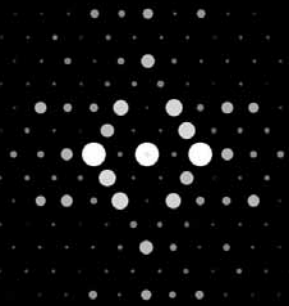


[001]

PRECESSION OFF

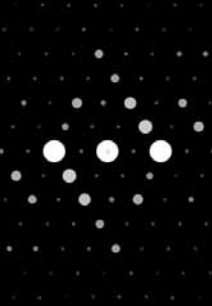


SIMULATION

PRECESSION ON

[1-10]

PRECESSION OFF



SIMULATION

PRECESSION ON

## LOST in the reciprocal space...

Albite has a complex triclinic crystal structure: when tilting several ED appear very similar between them.

Using precession, dynamical diffraction effects are greatly reduced and ED patterns are very close to ideal kinematical ;

different ZA orientations can be easily distinguished using precession

Courtesy M.Gemmi Univ of Milano



**NanoMEGAS**  
Advanced Tools for electron diffraction