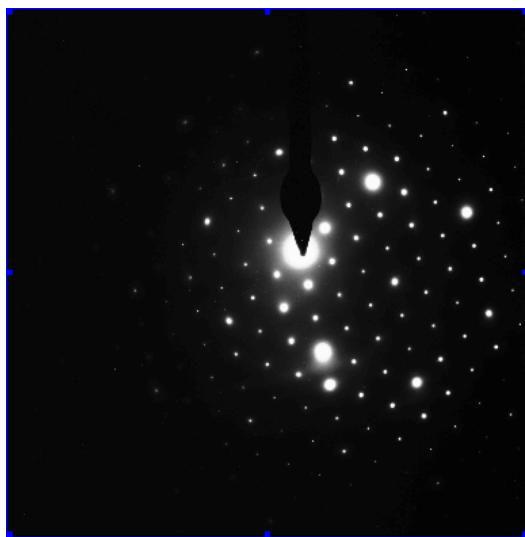
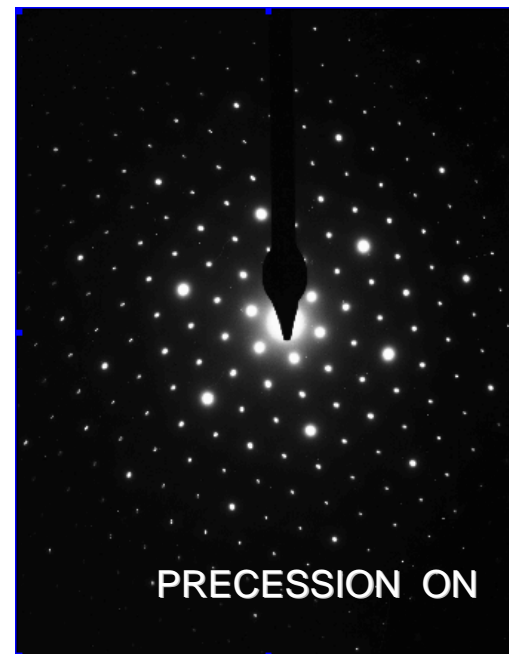
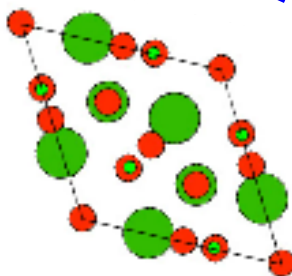
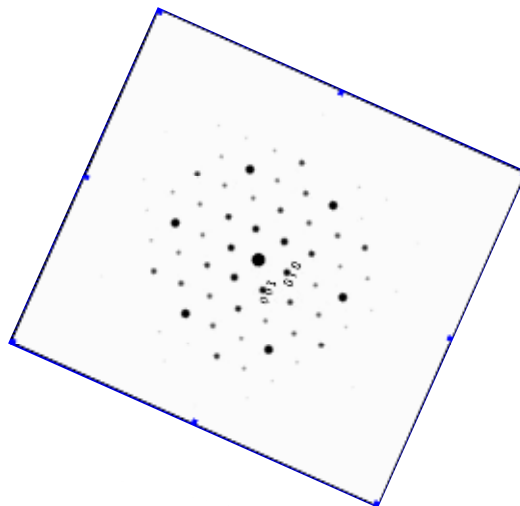


MINERALS : Perfect Crystal Orientation Using Precession



PRECESSION OFF



PRECESSION ON

LIZARDITE MINERAL

Crystals –specially minerals -usually grow in platelet or fiber shape and results difficult to orient perfectly in a particular zone axis; in this example lizardite crystals are perfectly oriented after precession is on.

